

JAMES MADISON INTERMEDIATE SCHOOL

BACK TO SCHOOL NIGHT



SESSION 1 --- 6:00 - 6:25
SESSION 2 --- 6:30 - 6:55

[LINKS TO
TEACHERS'
MEETINGS](#)

**THURSDAY
9/10/20**

MRS. ABATEMARCO, PRINCIPAL

Graduate of Edison
Public Schools

Starting my 17th year in
Edison and my 4th year
as the Proud Principal at
JMI! ♥ ♥

[donna.abatemarco@edi
son.k12.nj.us](mailto:donna.abatemarco@edison.k12.nj.us)



MR. MIRFIELD ASSISTANT PRINCIPAL

Graduate of Edison Public
Schools and a former JMI
Knight!

Starting my 15th year in
Edison Public Schools and my
2nd year as the proud
Assistant Principal at JMI!

brian.mirfield@edison.k12.nj.us



JMI Main Office Team

Position	Name
Secretaries	<u>Ms. Luciano</u> (Mrs. Abatemarco's Secretary) <u>Ms. DeJohn</u> (Secretary - Attendance)
Nurse	<u>Mrs. Mateicka</u> <u>Mrs. Mateicka's Website</u>
School Counselor	<u>Mr. Ford</u> <u>Mr. Ford's Website</u>
Armed Security Guard	"Mr. Jimmy"
Custodial Team	Mr. Paul (Facility Manager), Mr. Matt, Mr. Justin, Mr. Joe
Child Study Team	<u>Mrs. Erinn Moane</u>

GETTING SET FOR REMOTE LEARNING



- ❑ Logging into the Chromebook
- ❑ Accessing Classlink
- ❑ Your child has a Google Classroom code for their homeroom, specials, and specialists classroom (if applicable)
- ❑ Joining [Google Classroom](#)
- ❑ Additional [Tech Tutorials](#)
- ❑ Logging onto Zoom or Google Meet

Logging Onto Classlink



- ❑ [Finding your child's username and password](#)
- ❑ Access Classlink by following the steps in the video:
 - ❑ [On a Chromebook](#)
- ❑ All apps, websites, and learning platforms can be accessed from this “one-stop shop”

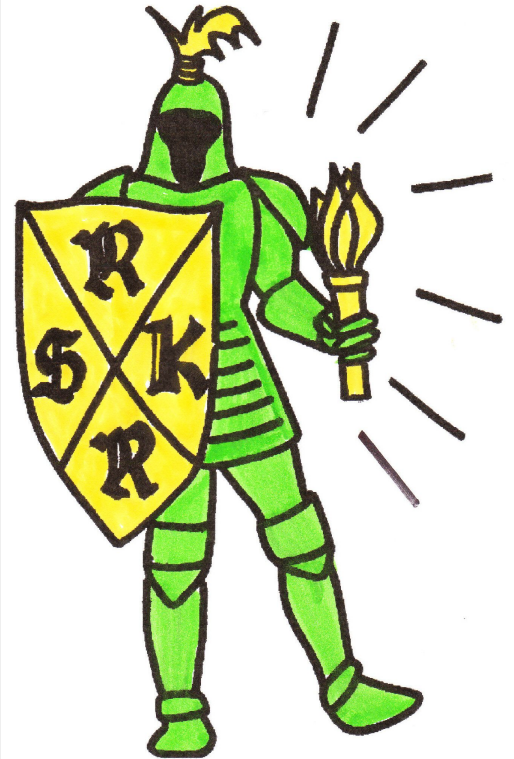
DAILY SCHEDULE - REMOTE/HYBRID PLAN

James Madison Intermediate Remote/Hybrid Schedule							
	3A	3B	4A	4B	5A	5B	LLD
	3-1, 3-3, 3-6, 3-8	3-2, 3-4, 3-5, 3-7, 3-9	4-1, 4-2, 4-4, 4-5, 4-6	4-3, 4-7, 4-8, 4-9	5-1, 5-2, 5-3, 5-4, 5-5	5-6, 5-7, 5-8, 5-9	
9:00-9:20	Morning meeting- all students join	Morning meeting- all students join	Morning meeting- all students join	Morning meeting- all students join	Morning meeting with homeroom	Morning meeting with homeroom	Morning meeting- all students join
9:20-9:50	Reading	Math	Special/Prep	Science/Writing	With Homeroom (one pd Reading/one period Writing or one pd Math/one period Science)		
9:52-10:22	Reading Sm Group	Math Sm Group	Science/Writing	Special/Prep			
10:24-10:29	Break	Break	Break	Break	Break	Break	Break
10:29-10:59	Math	Reading	Math	Reading	Special/Prep	Morning meeting with partner class	
11:01-11:31	Math Sm Group	Reading Sm Group	Math Sm Group	Reading Sm Group	Morning meeting with partner class	Special/Prep	
11:33-11:38	Break	Break	Break	Break	Break	Break	Break
11:38-12:08	Special/Prep	Science/Writing	Reading	Math	With Partner Homeroom (one pd Reading/one period Writing or one pd Math/one period Science)		Math
12:10-12:40	Science/Writing	Special/Prep	Reading Sm Group	Math Sm Group			
12:40-12:55	Closing Circle	Closing Circle	Closing Circle	Closing Circle	Closing Circle	Closing Circle	Closing Circle
12:55-1:55	Lunch	Lunch	Lunch	Lunch	Lunch	Lunch	Dismissal (12:45 - 1:00) Lunch
1:55-2:15	Small group for all subjects	Small group for all subjects	Small group for all subjects	Small group for all subjects	Small group for all subjects	Small group for all subjects	Homework/ Student Independent Practice
2:20-2:40	Small group for all subjects	Small group for all subjects	Small group for all subjects	Small group for all subjects	Small group for all subjects	Small group for all subjects	
2:45-3:05	Small group for all subjects	Small group for all subjects	Small group for all subjects	Small group for all subjects	Small group for all subjects	Small group for all subjects	
3:10-3:30	Small group for all subjects	Small group for all subjects	Small group for all subjects	Small group for all subjects	Small group for all subjects	Small group for all subjects	Special/Prep

- ★ Six Period Schedule
- ★ 30 Minute Periods
- ★ Rotating Specials
- ★ Each Day Begins with Morning Meeting
- ★ Each Day Ends with Closing Circle
- ★ Flexible Afternoon Small Groups for:
 - Additional Support
 - Enrichment
 - Review and Practice

SPECIALS SCHEDULE

- ❑ Students will attend a Daily Special just like during traditional learning
- ❑ Live Instruction (30 minutes per day)
- ❑ Rotating Schedule
- ❑ 2 Days of Physical Education, 1 Day of Art, 1 Day of Music, and 1 Day of World Language



LIVE INSTRUCTION

New for 2020 -2021

Revised Schedule with LIVE learning all day long. Periods dedicated to core content subjects and specials.

Small group instruction in the morning and afternoon meant to mimic the structure of our traditional school day.

9:00 - 3:30

Social Emotional Learning built in with Morning Meeting, Closing Circle and other times.



Expectations

Students are present for lessons and participated through discussion or chats.

Parents/Guardians communicate with teachers

Parents/Guardians/Students cannot record lessons.

Parents/Guardians cannot interject during lessons.

Respect privacy and confidentiality.

LEARNING PLATFORMS

- ❑ Google Classroom
- ❑ Class Link
- ❑ Gmail
- ❑ Google Meet/Zoom
- ❑ Exact Path (Edmentum)
- ❑ Study Island
- ❑ **ELA** - Collaborative Classroom
Literacy, RazKids, NewsELA
- ❑ **Math/Science** - Saavas (Math),
Discovery Education (Science)



ATTENDANCE

- ☐ Attendance will be taken remotely every day.
- ☐ Students should be on-time to each class period and attend the full class session.
- ☐ If your child will be absent, please be sure to call the main office by 9:00AM or you can [mark your child absent through Parent Portal.](#)



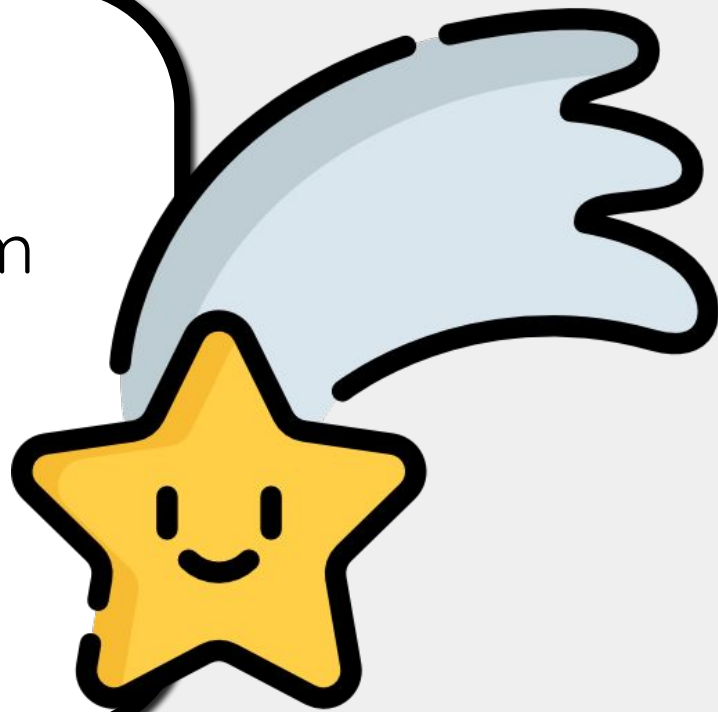
BUILDING CONNECTIONS

- ❑ Morning Meetings
- ❑ Closing Circles
- ❑ Relationship Building
- ❑ Afternoon Social Enrichment with Related Arts Teachers
- ❑ Class Connections (optional)
 - ❑ Birthdays - No Food/Beverage allowed; Invites only permitted to be handed out in school if entire class is invited.



GRADING AND SUBMITTING WORK

- ☐ Check-Ins During Live Instruction
- ☐ Checking Google Classroom
- ☐ Submitting Digitally
- ☐ Genesis
 - ☐ Updated Weekly
- ☐ Report Cards
 - ☐ No Rubric like 2020 MP4



OTHER PROGRAMMING

- ❑ English as a Second Language (ESL)
- ❑ Gifted and Talented
- ❑ Reading Intervention
- ❑ Math Intervention
- ❑ [Band/Strings](#)
- ❑ 4th & 5th Grade Chorus

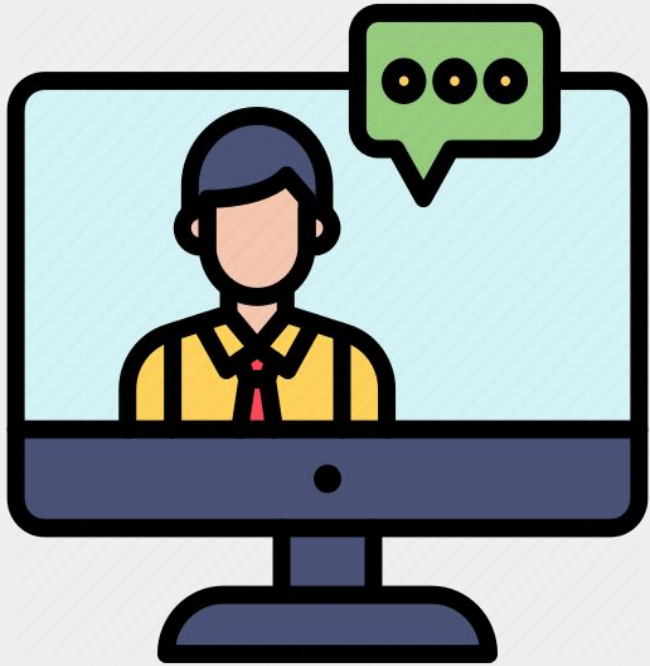


PARENT INVOLVEMENT



- ❑ Building Independence
- ❑ Technology Support
- ❑ Checking Emails - Blasts
- ❑ Communication with Teachers
- ❑ [JMI PTO](#)

TECHNOLOGY SUPPORT



- ❑ Issue with Device: [Fill Out the Tech Ticket](#)
- ❑ [Insurance Available for Device](#)
- ❑ Genesis: contact help desk
- ❑ [WiFi: let us know if you do not have WiFi access](#)
- ❑ Helpdesk Email: help.desk@edison.k12.nj.us
- ❑ Helpdesk Phone: 732-452-4998

Building Protocols



- ❑ Anyone entering the building must be screened for temperature and wear a mask.
 - ❑ Limit entry into building as much as possible.
- ❑ Please **bring your own pen** when coming to school to complete forms (sign out your child, complete school forms)
- ❑ Hand Sanitizer in lobby & classrooms
- ❑ Temperature Scan in the lobby & Door 6
- ❑ Isolations rooms

FOOD SERVICE



- ❑ Starting 9/8/20 breakfast and lunch served to all students.
- ❑ Menu choices are available through the [district website](#).
- ❑ Food will be ready for pick up in lobby between 10:30 - 12:30.
 - ❑ Call office from car. Bagged lunch/breakfast will be placed on desk outside front door.

MEET AND GREET TRENDS

- ❑ Connectivity Issues
- ❑ Too much screen time
 - ❑ 20/20/20
 - ❑ look away from the screen every 20 minutes, focus on an object at least 20 feet away, for at least 20 seconds.
 - ❑ Spend time outside if possible
 - ❑ Reduce screen time 1-2 hours before bedtime
- ❑ Pacing - give students time to acclimate
- ❑ Small Group Time - independent practice, Raz Kids, Exact Path, Study Island, etc.
 - ❑ Teachers will set schedule.
 - ❑ Student Independence during Small Group
- ❑ Socialization



LOOKING FORWARD

- ❑ Plans for the Future
- ❑ October 19th Reassessment
- ❑ Hybrid Instruction
- ❑ [Road to Recovery](#)
- ❑ JMI Clubs -



THANK YOU!!



James Madison Intermediate School depends on strong working partnerships with our families and this year that collaboration is more important than ever. Please communicate with your child's teachers and school personnel with any questions or concerns. We are in this together and by working collaboratively we can **SOAR TO NEW HEIGHTS** this year!

MEETING WITH TEACHERS



Two Sessions tonight

Session 1 – 6:00 – 6:25

Session 2 – 6:30 – 6:55

***5th Grade Teachers hosting their own presentation so use one session to attend your child's ELA teacher and one session for your child's Math/Science Teacher**

**[CLICK HERE TO ACCESS LINKS TO TEACHER'S
BTSN MEETINGS.](#)**